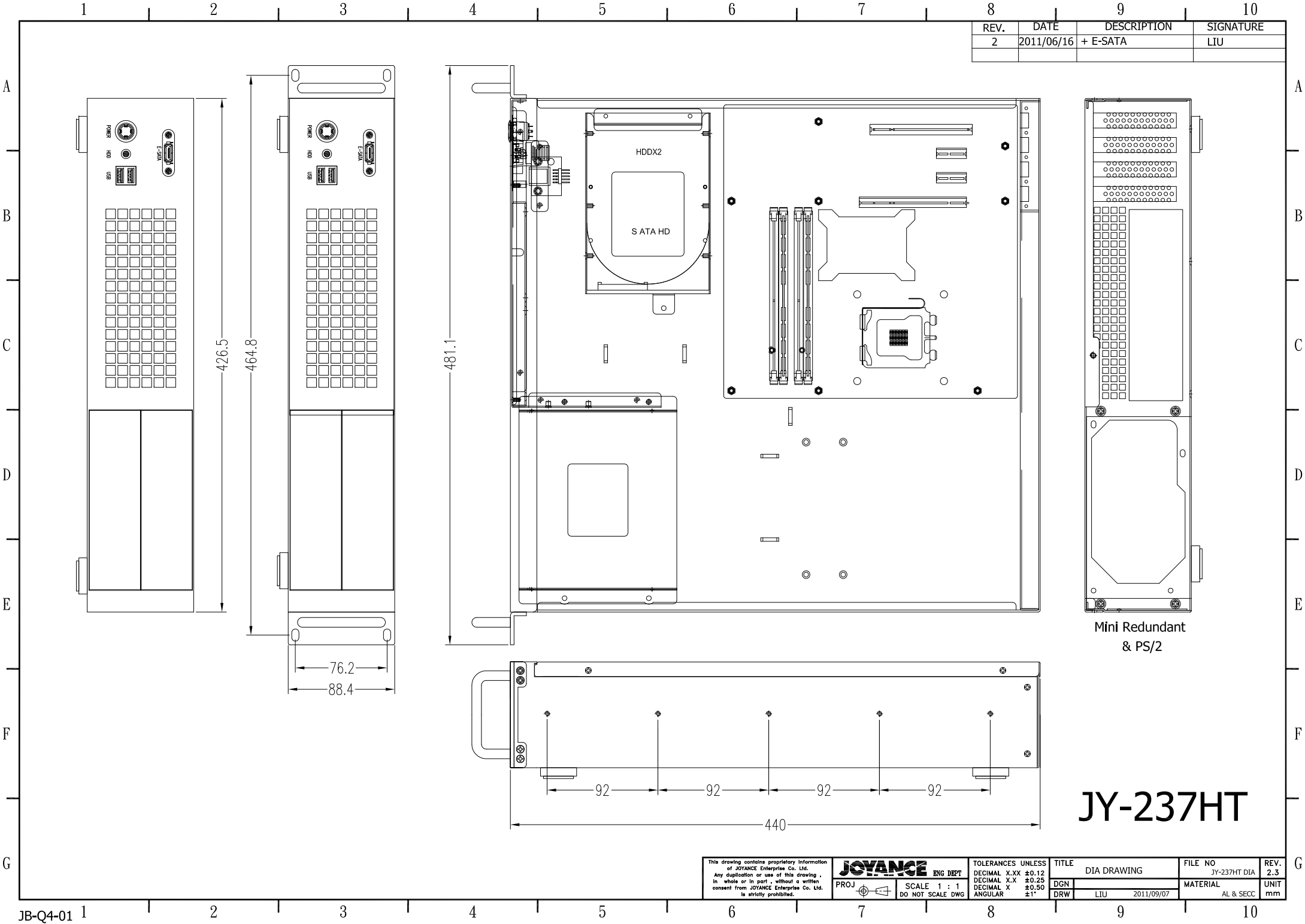


REV.	DATE	DESCRIPTION	SIGNATURE
2	2011/06/16	+ E-SATA	LTU



Mini Redundant
& PS/2

JY-237HT

This drawing contains proprietary information of JOYANCE Enterprise Co. Ltd. Any duplication or use of this drawing, in whole or in part, without a written consent from JOYANCE Enterprise Co. Ltd. is strictly prohibited.		JOYANCE ENG DEPT	TOLERANCES UNLESS DECIMAL X.XX ±0.12 DECIMAL X.X ±0.25 DECIMAL X ±0.50 ANGULAR ±1°	TITLE DIA DRAWING	FILE NO JY-237HT DIA	REV. 2.3
PROJ	SCALE 1 : 1 DO NOT SCALE DWG	DGN	DRW	LTU 2011/09/07	MATERIAL AL & SECC	UNIT mm

JY-237-HT(PC) 2U Rack Mount Chassis for Micro-ATX or ATX

1. Dimension (D*W*H): 440x426.5x88.4 (17.32"x16.79"x3.48")
2. Form Factor: micro-ATX MB
3. Drive Bay Cage (external): 5.25"x2
4. Drive Bay Cage (internal): 3.5"x2
5. Rear Window: 4 low profile
6. PS/2 or Mini-Redundant power supply
7. Control Plate:
 - Illuminated Push Power Button(AV01L-B32-M3-FR-B-6V)
 - HDD LED Display(red)
 - Dual Port USB access port
 - One **eSATA** access port
8. Color: beige (RAL-7032) or black (RAL-9005)
9. Optional Accessories
 - 8cm Fan (available space: 2 pcs)
 - Slide Rail 18" or 24"
 - 2U Riser Card (P/N RK-215C-2)
 - Foot Pad



HTPC Style



Brushed Front Plate



eSATA & Dual USB Access Ports



Low Profile Rear Window



With foot pad (optional)

